

# Grousemount Windfarm

A WHOLLY OWNED SUBSIDIARY OF



Energy for  
generations

DEVELOPED BY  
KERRY WIND POWER LTD



SPRING 2018

## SECOND PROJECT NEWSLETTER

Dear Reader,

We are very pleased to issue the project's second newsletter. Great progress has been made over a difficult winter period and the co-operation of the local community is very much appreciated during this time. As you can see from the photo below a significant new bridge has been constructed across the Roughty River close to the site entrance. Works on site are now ramping up and we are delighted to see so many local people and businesses getting work and trade benefiting from the project.

Kind Regards,

John Kelly, Project Director

Diarmuid O'Sullivan, Community Liaison Officer



Access Bridge crossing the River Roughty



### In this issue:

- Project Update
- Construction Overview
- Grousemount
- How to contact us

Key components for  
development of the wind farm  
site over the coming months:

- Coomatagart 110 kV Substation
- Wind Farm Access Roads
- Turbine Foundations
- Underground Ducting
- Cable Installation

## GROUSEMOUNT WIND FARM

# BENEFITS OF THE DEVELOPMENT

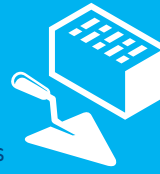


**CLEAN ELECTRICITY  
70,000 HOMES**  
for homes, farms, hospitals,  
schools and businesses across  
Ireland.

**RATES PAID** by the wind  
farm to Kerry County Council  
will support the provision of  
local services.



**SUPPORT THE TRANSITION**  
from Ireland's reliance on imported fossil fuels  
to clean, locally generated renewable energy  
sources. Make a significant contribution towards  
Ireland's commitment of sourcing 40% of our  
electricity needs from renewable sources by 2020.



**STONE AND  
CONCRETE** used  
for construction will be  
sourced from local quarries.

**OVER 3.6 M**

total value of the Community  
Benefit Fund to support  
local projects and amenities/  
recreational facilities.



**6 FULL TIME JOBS**  
associated with wind  
farm maintenance during  
operational phase.



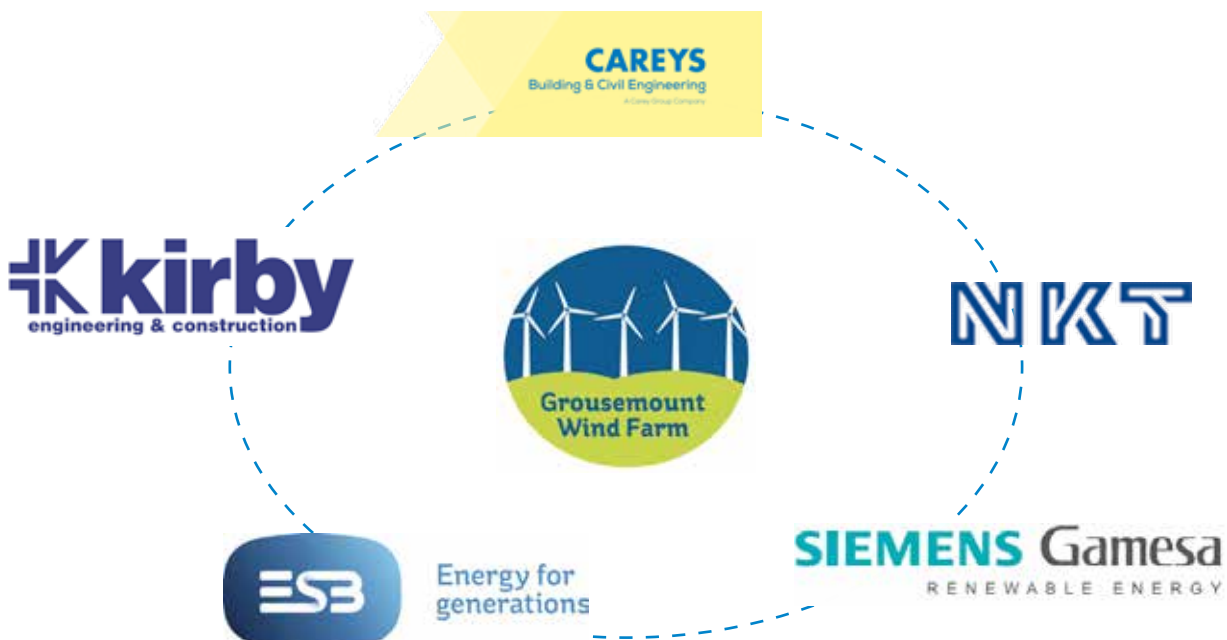
**JOBS 70**  
construction jobs  
at peak employment.

## Grousemount Project: The Contractors:

ESB Wind Development Ltd will have overall management/engineering of the construction of the project.

The major contracts for construction of the project have been awarded. These will include a main contractor building the wind farm and underground ducting, **Carey's Building & Civil Engineering** ([www.careysplc.ie](http://www.careysplc.ie)), Substation construction by **Kirby's Engineering & Construction** ([www.kirby.ie](http://www.kirby.ie)), Turbine supply and erection by **Siemens Gamesa** ([www.siemensgamesa.com](http://www.siemensgamesa.com)), grid cable manufacturer **NKT**.

There are opportunities for local suppliers to register their interest in the project, a very successful "Meet the Contractor" night was held on the 9th January at Creedon's Bar, top of Coom. Please contact the Project Team if you have any services relevant to this wind farm construction project. Grousemount WF will contribute to the Local economy by supporting Local business.



# Overview of the coming months!

## Preliminary wind farm construction works update

- Construction of the main site compound is now commenced and will be in place before Summer.
- Access road along Sillahertane lane has been cleared of Rhododendron cover and road widening has been completed.
- Construction of the main access bridge over the River Roughy is nearing completion which will open access to the main wind farm construction phase.
- Construction of the main access road to the Wind Farm site is ongoing with clearing and profiling works underway ahead of the new road being laid.
- The substation site works are under way since the beginning of the year.

## Traffic Management

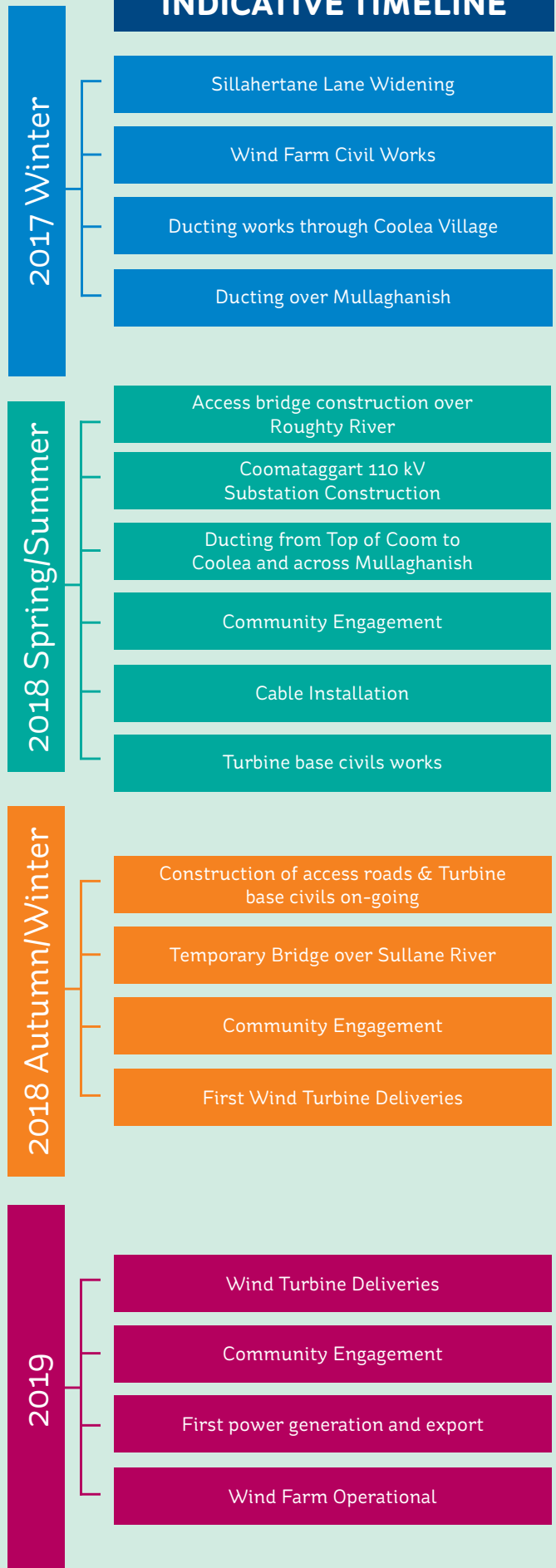
During construction, local access will be maintained for residents and regular road users. During construction there will be increased traffic volumes to and from the site. All construction traffic will follow an agreed designated transport route. Your patience in this regard is much appreciated.

## Health & Safety

The wind farm is fully committed to the health and safety of all workers on site. The highest safety standards will be maintained during the construction and operation of the wind farm.

Text message alert system is in place to keep the communities informed of on-going site activities.

## INDICATIVE TIMELINE



## Local Sponsorship

We are pleased to have had the opportunity to provide financial assistance and support to the following recent initiatives and events in the local area:

- SSC Broadband service in The Glen
- Garden Polytunnel Coolea National School
- Sports kits Naomh Aban Cailíní fé 14
- Sports gear Bol-Chumann Reiguin na Gaeltacht
- Cruinniú na bhFlúit - Coolea Flute Meeting



## HOW TO CONTACT US

The project team is committed to keeping the local community up to date with the construction of the Grousemount Wind Farm. Our Community Liaison Officer (CLO) and members of the project team are available to meet you locally to discuss all aspects of the project at your convenience. We will also provide regular updates through newsletters, texts and on the project website, [www.grousemountwindfarm.ie](http://www.grousemountwindfarm.ie). If you wish to be included on the communication list please contact CLO below.

If you have any questions or queries, please contact us on:

Local

@ Email: [info@grousemountwindfarm.ie](mailto:info@grousemountwindfarm.ie)

For more information about the Grousemount Wind Farm project, please visit [www.grousemountwindfarm.ie](http://www.grousemountwindfarm.ie).

Kerry Wind Power Ltd

Name: Diarmuid O'Sullivan

Phone: (087) 9882288

@ Email: [Info@grousemountwindfarm.ie](mailto:Info@grousemountwindfarm.ie)

